



wth<sup>®</sup>

---

# Emeraldalda Three

---

[waytohome developments.com](http://waytohome developments.com)  
MEMBER OF RCI GROUP

A young couple is sitting together, smiling warmly. The woman is on the left, wearing a light-colored cardigan, and the man is on the right, wearing a dark grey long-sleeved shirt. They are both looking towards a small, fluffy white dog sitting in front of them. The dog is wearing a white sweater with brown spots and a blue collar. The background is softly lit, featuring a window with white curtains and some dried plant arrangements. The text "developed with purpose" is overlaid in the center of the image in a white, sans-serif font.

developed **wth**<sup>®</sup> purpose



# Emeralda Three

Embarking on a journey of luxury living in Agios Athanasios.

Where elegance meets elevation in the heart of Agios Athanasios. It features twelve luxurious apartments including studios, one-bedroom, and two-bedroom units.

Designed with bold modern lines and refined detail, this boutique residence offers spacious apartments with expansive verandas & panoramic sea and city views, and interiors crafted for luxury living.

12  
apartments

3 Studios

3 One Bedroom Apartments

6 Two Bedroom Apartments

# A Perfect Location

## Agios Athanasios, Limassol

Emeralda Three is a boutique residential project in Agios Athanasios. Just minutes from Limassol's vibrant center yet tucked in a serene residential enclave, Emeralda 3 blends style, comfort, and location into one of the most sought-after addresses in the city.



2min drive  
from school



15min from  
Molos Promenade



5min drive  
from beach



15min from  
Old Port



5min drive  
from retail store



15min from  
Limassol Marina



5min drive  
from park



# Design

Modern lines  
and refined detail



# Facilities

Every detail has been crafted to meet the high expectations of the residents.

Everyday essentials close to home. One of the most influential projects in Agios Athanasios amidst a haven of amenities.



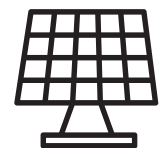
Private Parkings



Roof Garden



CCTV



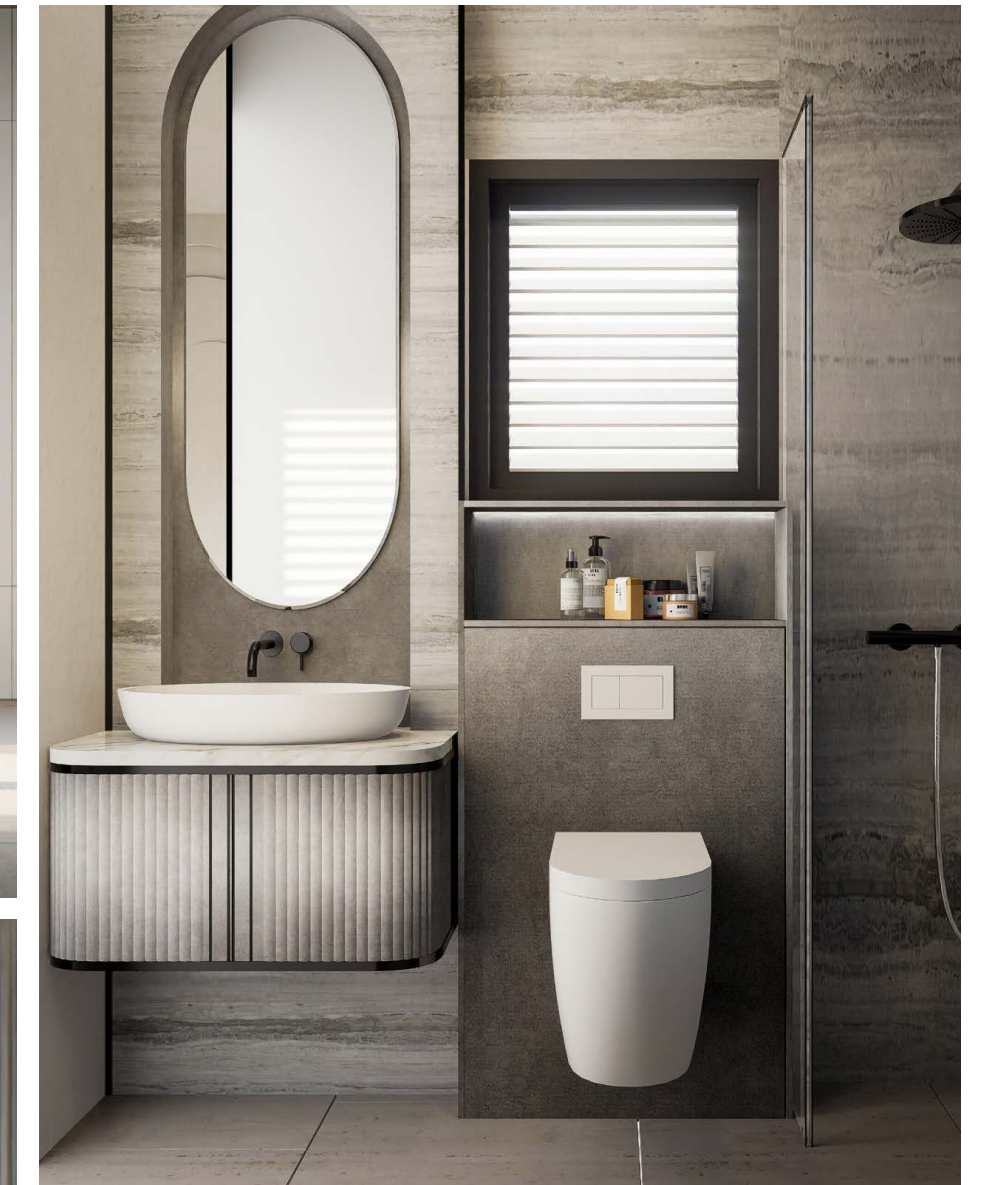
Solar Panels



Private Storage Area



# Interior Design



# Choice of properties

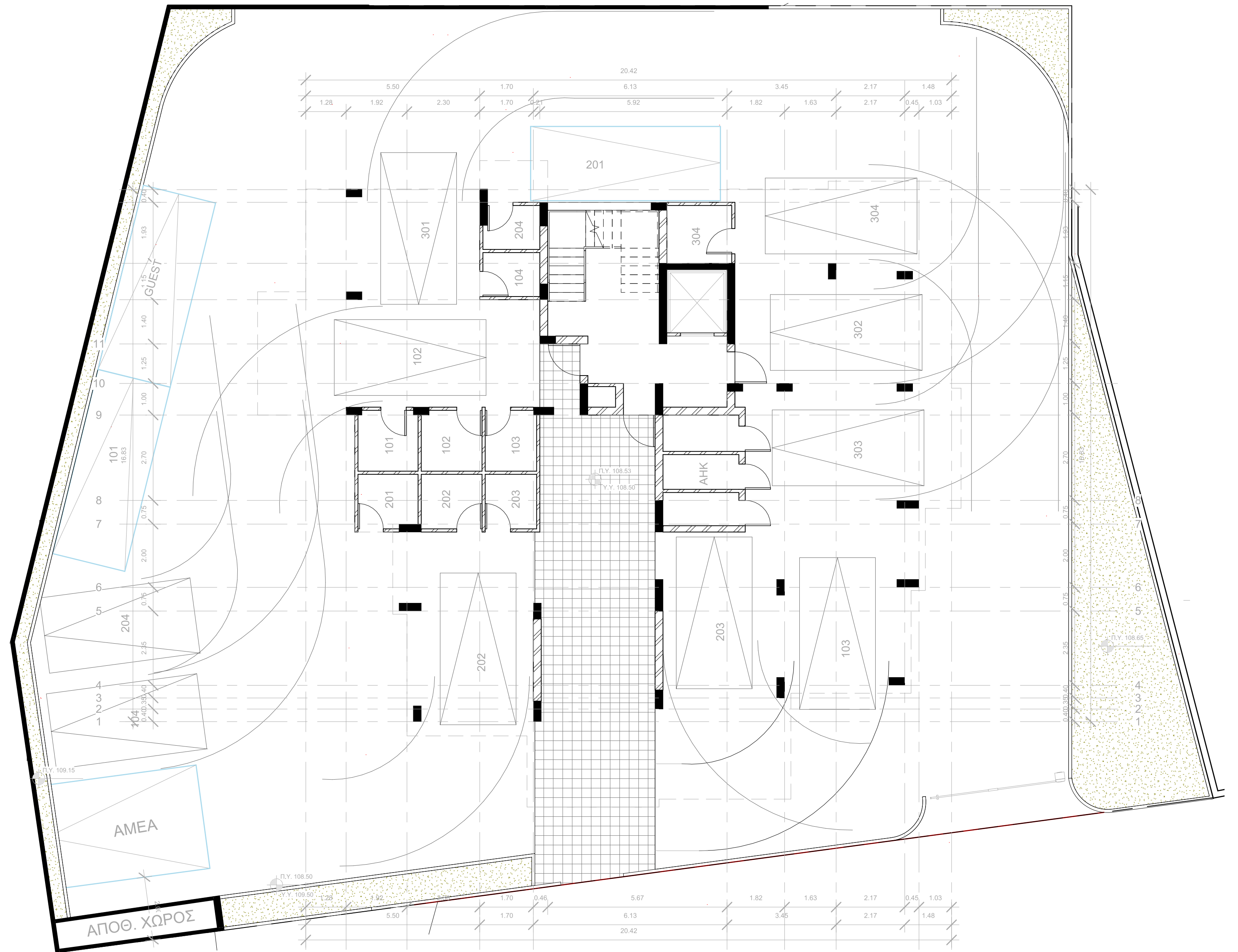
Unit No	Beds	Baths	Internal Area m <sup>2</sup>	Covered Veranda m <sup>2</sup>	Parking Space	Uncovered Veranda m <sup>2</sup>	Total m <sup>2</sup>
1st Floor							
101	1	1	50	11	1	-	103
102	2	2	80	20	1	-	
103	2	2	80	20	1	-	
104	Studio	1	35	10	1	-	103
2nd Floor							
201	1	1	50	11	1	-	103
202	2	2	80	20	1	-	
203	2	2	80	20	1	-	
204	Studio	1	35	10	1	-	103
3rd Floor							
301	1	1	50	11	1	50	104
302	2	2	80	20	1	70	
303	2	2	80	20	1	70	
304	Studio	1	35	10	1	-	104



\* Prices are subject to change without any prior notice & are vat exclusive

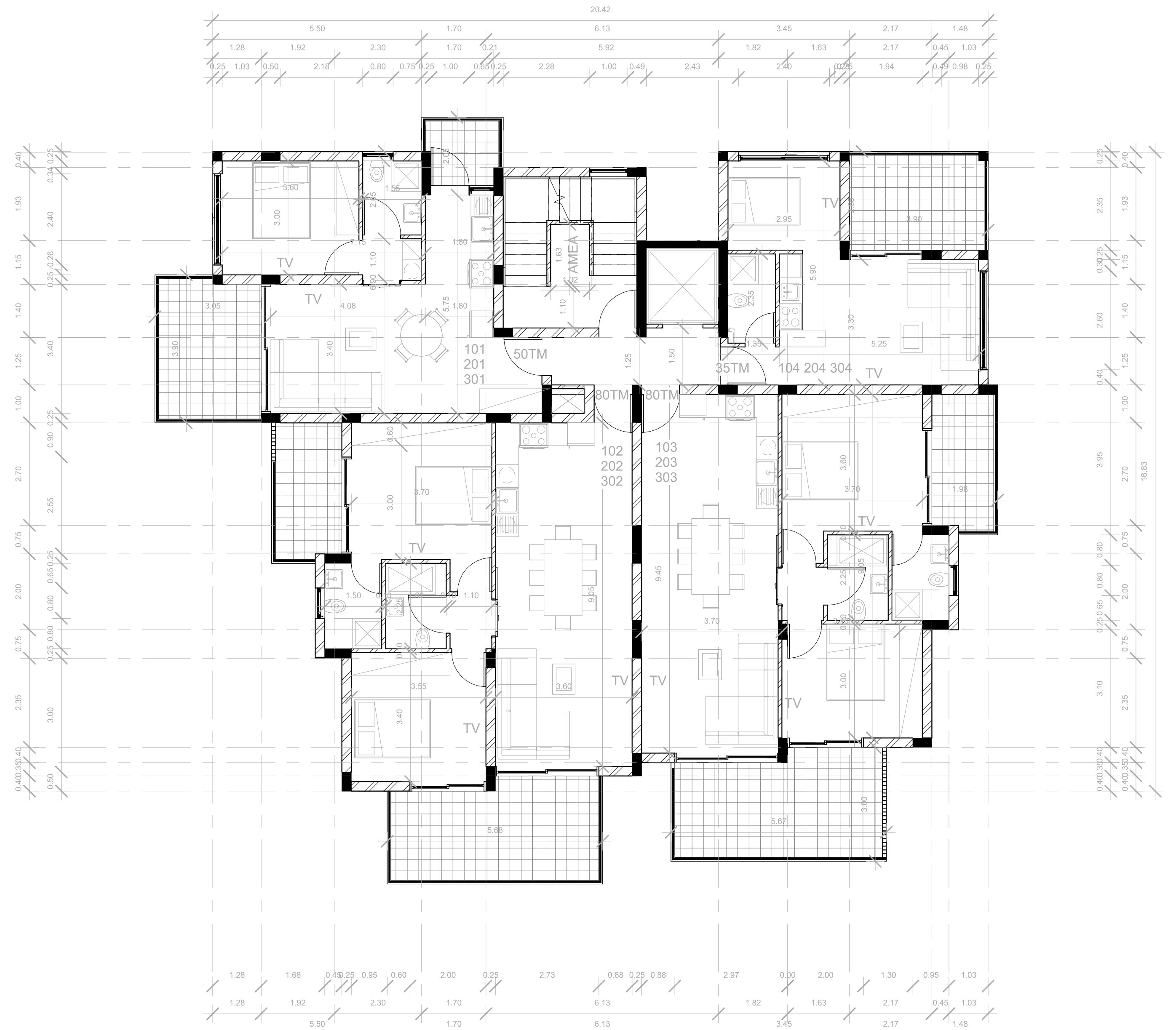
# Floorplans

## Ground Floor



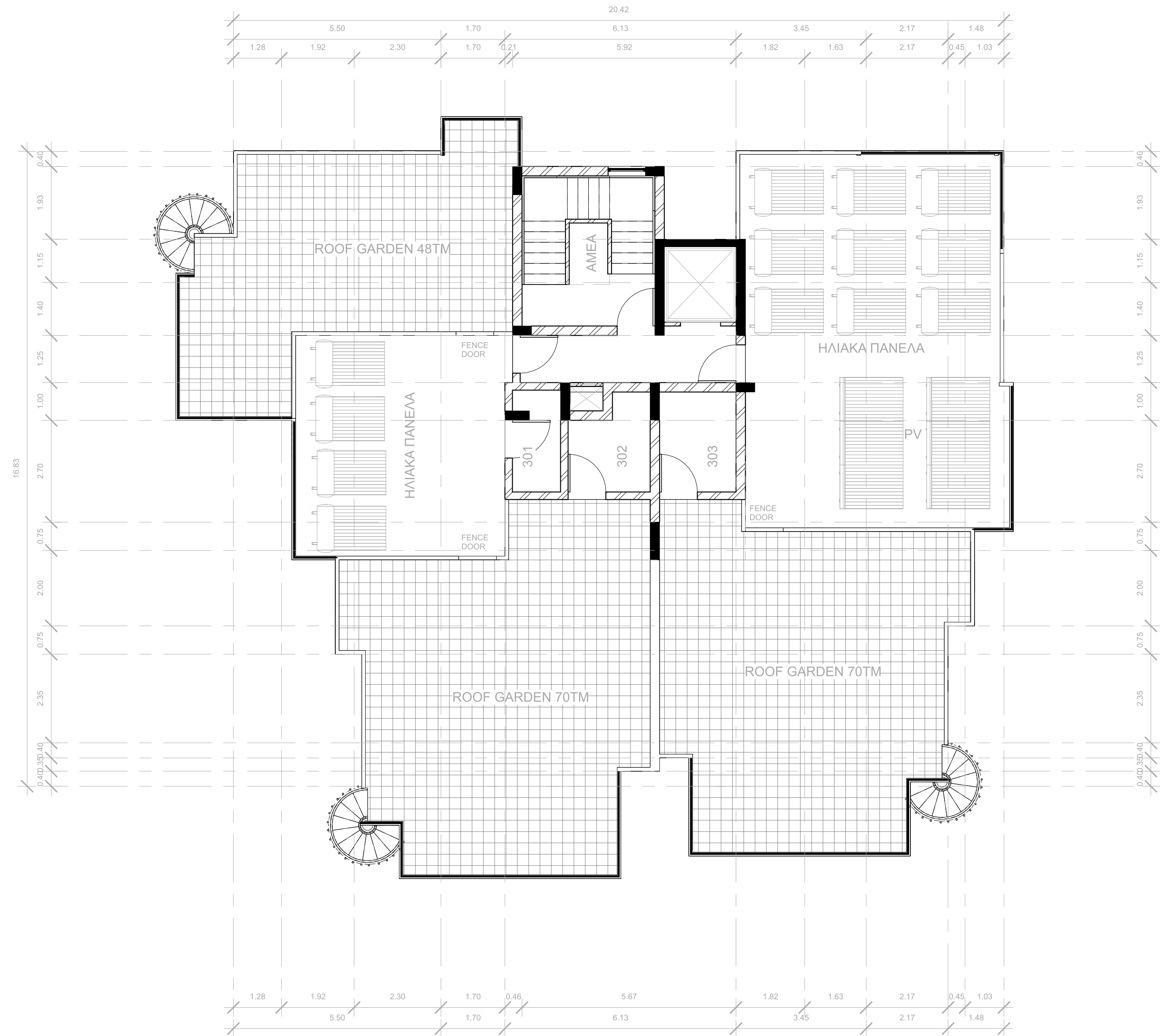


# 2nd Floor





# Roof Garden





wth<sup>®</sup>

It all began in Beirut, where our passion for real estate first took shape. From those humble beginnings, we have grown to deliver more than 500 homes across Beirut and Cyprus - each defined by credibility, quality, and thoughtful design. Today, Way to Home Developments creates not just buildings, but homes with purpose and trust.

 WTH - Way To Home

 waytohomedevelopments

 Way to Home Developments (WTH)

**wth**<sup>®</sup>

Developed with purpose

Cyprus: 80 Gladstonos Str., 3040 Limassol  
Lebanon: Beirut, Abraj Al Madina  
+357 99 049444 | [info@waytohomedevelopments.com](mailto:info@waytohomedevelopments.com)

[waytohomedevelopments.com](http://waytohomedevelopments.com)

MEMBER OF RCI GROUP